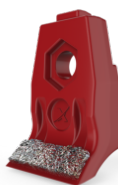
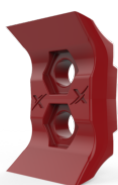
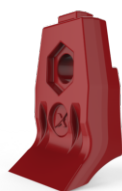
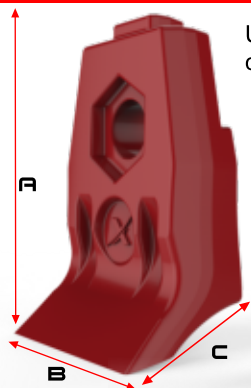


# COMPARISON CHART



	XFM-DC159-PL	XFM-DC196-PL	XFM-DC220-HF	XFM-DC173-PC	XFM-DC218-PC
DURABILITY IN HIGH IMPACT ROCKY CONDITIONS	 FAIR GOOD BETTER BEST	 FAIR GOOD BETTER BEST	 FAIR GOOD BETTER BEST	 FAIR GOOD BETTER BEST	 FAIR GOOD BETTER BEST
DURABILITY IN HIGH ABRASIVE SANDY CONDITIONS	 FAIR GOOD BETTER BEST	 FAIR GOOD BETTER BEST	 FAIR GOOD BETTER BEST	 FAIR GOOD BETTER BEST	 FAIR GOOD BETTER BEST
DURABILITY IN COLD CLIMATE CONDITIONS	 FAIR GOOD BETTER BEST	 FAIR GOOD BETTER BEST	 FAIR GOOD BETTER BEST	 FAIR GOOD BETTER BEST	 FAIR GOOD BETTER BEST
FASTEST MULCHING PERFORMANCE	 FAIR GOOD BETTER BEST	 FAIR GOOD BETTER BEST	 FAIR GOOD BETTER BEST	 FAIR GOOD BETTER BEST	 FAIR GOOD BETTER BEST
GIVES THE BEST FUEL ECONOMY PERFORMANCE	 FAIR GOOD BETTER BEST	 FAIR GOOD BETTER BEST	 FAIR GOOD BETTER BEST	 FAIR GOOD BETTER BEST	 FAIR GOOD BETTER BEST
PRODUCES FINEST QUALITY OF MULCH	 FAIR GOOD BETTER BEST	 FAIR GOOD BETTER BEST	 FAIR GOOD BETTER BEST	 FAIR GOOD BETTER BEST	 FAIR GOOD BETTER BEST
LEAST AMOUNT OF DAILY MAINTENANCE	 FAIR GOOD BETTER BEST	 FAIR GOOD BETTER BEST	 FAIR GOOD BETTER BEST	 FAIR GOOD BETTER BEST	 FAIR GOOD BETTER BEST
AVERAGE LIFE EXPECTANCY (Life Expectancy Depends on Soil Conditions & Operator Experience)	LOW END HIGH END  90 HRS 120 HRS	LOW END HIGH END  90 HRS PER SIDE 120 HRS	LOW END HIGH END  70 HRS 100 HRS	LOW END HIGH END  250 HRS 500 HRS	LOW END HIGH END  150 HRS 250 HRS

# XTREME



Used in all around conditions such as high impact soils. Ideal for colder climate use. Produces the finest cut of mulch.



## XFM-DC159-PL

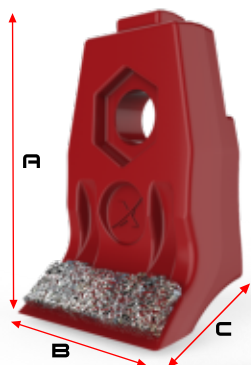
SHARP EDGE PLANER KNIFE

CUTTER TYPE	STEEL TYPE	STEEL HARDNESS	SINGLE BOLT REQUIRED	WEIGHT	A LENGTH	B WIDTH	C LENGTH
Wood	65Mn	HRC52-55	M20x1.5x80mm	2.45 lbs	4-3/8"	3"	2-1/4"

aftermarket replacement for:

**DENIS CIMAF**

fit models - DAH-065B, DAH-088B, DAH-100C, DAH125D, DAH-150ER, DAF-150D, DAF-180, DAF-180E, DAF 225E, DAF 225EX



Used in all around conditions. Added on lasered tungston carbide / cobalt grit hard surfacing to add protection in abrasive soil conditions. Ideal for colder climate use.



## XFM-DC220-HF

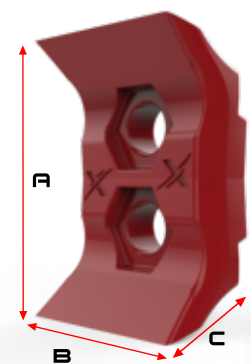
PLANER KNIFE /W HARFACING PROTECTION

CUTTER TYPE	STEEL TYPE	STEEL HARDNESS	SINGLE BOLT REQUIRED	WEIGHT	A LENGTH	B WIDTH	C LENGTH
Wood	65Mn	HRC52-55	M20x1.5x80mm	2.60 lbs	4-3/8"	3"	2-1/4"

aftermarket replacement for:

**DENIS CIMAF**

fit models - DAH-065B, DAH-088B, DAH-100C, DAH125D, DAH-150ER, DAF-150D, DAF-180, DAF-180E, DAF 225E, DAF 225EX



Reversible planer knife. Quick to flip having a 2nd sharp knife ready to go. Used in all around conditions such as high impact soils. Produces the finest cut of mulch.



## XFM-DC196-PL

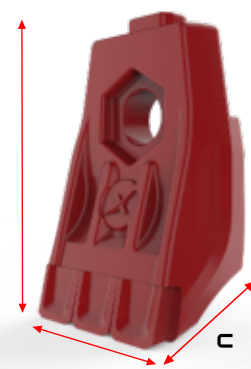
REVERSIBLE SHARP EDGE PLANER KNIFE

CUTTER TYPE	STEEL TYPE	STEEL HARDNESS	SINGLE BOLT REQUIRED	WEIGHT	A LENGTH	B WIDTH	C LENGTH
Wood	42CrMo	HRC40-42	M20x1.5x80mm	2.80 lbs	4-1/4"	2-1/2"	2"

aftermarket replacement for:

**DENIS CIMAF**

fit models - DAH-065B, DAH-088B, DAH-100C, DAH125D, DAH-150ER, DAF-150D, DAF-180, DAF-180E, DAF 225E, DAF 225EX



All around conditions. Added sharp edge high quality tungston carbide tips. Ideal for tougher soil bearing conditions, while giving a finer cut of mulch.



## XFM-DC218-PC

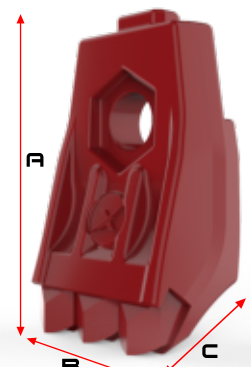
SHARP EDGE CARBIDE PLANER KNIFE

CUTTER TYPE	STEEL TYPE	STEEL HARDNESS	SINGLE BOLT REQUIRED	WEIGHT	A LENGTH	B WIDTH	C LENGTH
Wood	42CrMo	HRC40-42	M20x1.5x80mm	2.80 lbs	4-1/4"	2-1/2"	2"

aftermarket replacement for:

**DENIS CIMAF**

fit models - DAH-065B, DAH-088B, DAH-100C, DAH125D, DAH-150ER, DAF-150D, DAF-180, DAF-180E, DAF 225E, DAF 225EX



All around conditions. Added pointed edge high quality tungston carbide tips. Ideal for harshest soil bearing conditions.



## XFM-DC173-PC

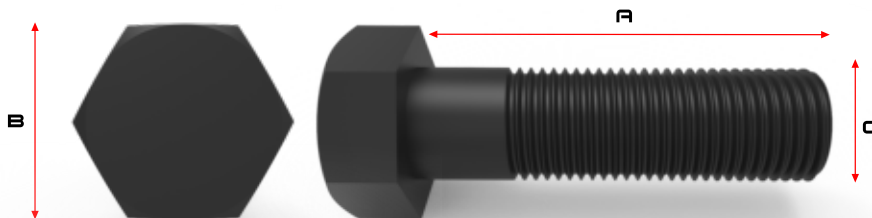
POINTED TIP CARBIDE PLANER TEETH

CUTTER TYPE	STEEL TYPE	STEEL HARDNESS	SINGLE BOLT REQUIRED	WEIGHT	A LENGTH	B WIDTH	C LENGTH
Wood	42CrMo	HRC40-42	M20x1.5x80mm	2.80 lbs	4-1/4"	2-1/2"	2"

aftermarket replacement for:

**DENIS CIMAF**

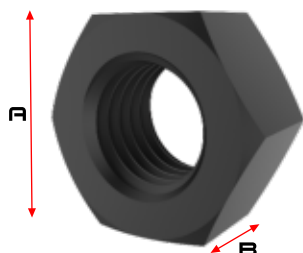
fit models - DAH-065B, DAH-088B, DAH-100C, DAH125D, DAH-150ER, DAF-150D, DAF-180, DAF-180E, DAF 225E, DAF 225EX



fit models - DAH-065B, DAH-088B, DAH-100C, DAH125D, DAH-150ER, DAF-150D, DAF-180, DAF-180E, DAF 225E, DAF 225EX

## HEX BOLT

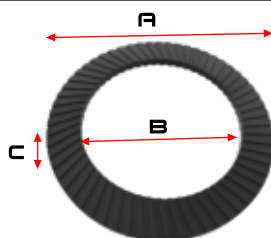
PART NUMBER	THREAD SIZE	MATERIAL TYPE	GRADE	HEAD TYPE	DRIVE SIZE	A LENGTH	B DIA	C DIA	FIT TEETH
M20x1.5x80 HEX	M20x1.5	Black Oxide Alloy Steel	12.9	Hex	30mm	80mm	30mm	20mm	XFM-DC159-PL, XFM-DC173-PC, XFM-DC196-PL, XFM-DC220-HF, XFM-DC218-PC



fit models - DAH-065B, DAH-088B, DAH-100C, DAH125D, DAH-150ER, DAF-150D, DAF-180, DAF-180E, DAF 225E, DAF 225EX

## NUT

PART NUMBER	THREAD SIZE	MATERIAL TYPE	GRADE	HEAD TYPE	WRENCH SIZE	A WIDTH	B THICKNESS	FIT TEETH
M20x1.5	M20x1.5	Black Oxide Alloy Steel	12.9	Hex	30mm	30mm	25mm	XFM-DC159-PL, XFM-DC173-PC, XFM-DC196-PL, XFM-DC220-HF, XFM-DC218-PC



fit models - DAH-065B, DAH-088B, DAH-100C, DAH125D, DAH-150ER, DAF-150D, DAF-180, DAF-180E, DAF 225E, DAF 225EX

## SERRATED WASHER

PART NUMBER	MATERIAL TYPE	MATERIAL HARDNESS	SERRATED	A OD	B ID	C THICKNESS	FIT BOLTS SIZE
M20W	Black Oxide Alloy Steel	C40	TOP & BOTTOM	29.85mm	20.85mm	1.86mm	M20