

### XFB-DF285

ONE PIECE FELLER BUNCHER STYLE

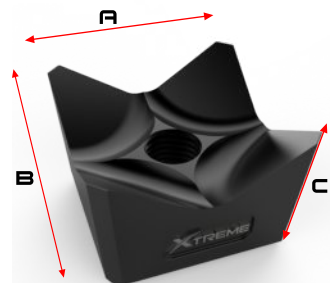
CUTTER TYPE	STEEL TYPE	STEEL HARDNESS	BOLT REQUIRED	WEIGHT
Wood	65Mn	HRC58-62	1/2-20	0.99 lbs



A	B	C
LENGTH	WIDTH	WIDTH
2"	1"	3/4"

aftermarket replacement for:  
**DIAMOND FORESTRY**

replaces parts - Diamond Forestry 22-019 & Quadco Q10078T



### XFB-QU209

TWO PIECE FELLER BUNCHER USE XFB-QU225T SHANK

CUTTER TYPE	STEEL TYPE	STEEL HARDNESS	THREAD TYPE	WEIGHT
Wood	65Mn	HRC58-62	1/2" NPT	0.80 lbs



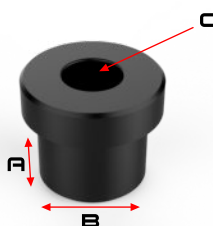
A	B	C
LENGTH	WIDTH	HEIGHT
2"	1-5/8"	1-5/8"

aftermarket replacement for:  
**DIAMOND FORESTRY**

replaces parts - Diamond Forestry 22-019 & Quadco Q10078T

## 3/4" SHANK

replaces - Quadco QH10067T

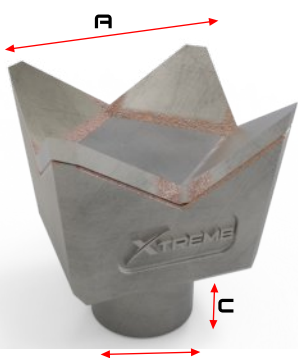


### XFB-QU225

USED WITH XFB-QU209 BEAVER TOOTH

FITS TYPE	STEEL TYPE	STEEL HARDNESS	HOLE OPENING	WEIGHT
XFB-QU209	65Mn	HRC58-62	1/2"	0.45bs

A	B	C
LENGTH	WIDTH	DIA
3/4"	1"	1/2"



### XFM-QU286-KIT

ONE PIECE CARBIDE FELLER BUNCHER STYLE

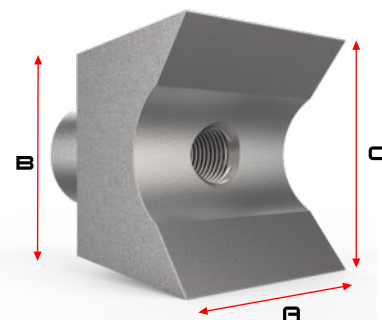
CUTTER TYPE	STEEL TYPE	STEEL HARDNESS	BOLT REQUIRED	WEIGHT
Wood	42 CrMo	HRC 42-44	(1) 1/2-20 x 3" SKT	1.10 lbs



A	B	C
LENGTH	WIDTH	WIDTH
2"	1"	3/4"

aftermarket replacement for:  
**DIAMOND FORESTRY**

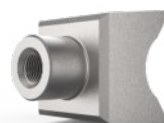
replaces parts - Diamond Forestry 22-019 & Quadco Q10078T



### XFM-DF320-PL

REVERSIBLE HARDENED STEEL PLANER KNIFE

CUTTER TYPE	STEEL TYPE	STEEL HARDNESS	SINGLE BOLT REQUIRED	WEIGHT
Wood	65Mn	HRC57-60	1/2-20	1.13 lbs



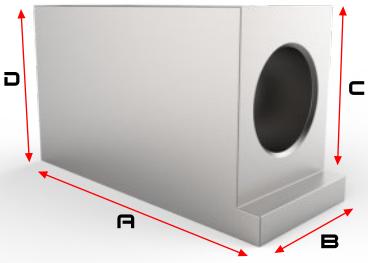
A	B	C
LENGTH	WIDTH	DIA
2"	1-3/16"	2"

aftermarket replacement for:  
**DIAMOND FORESTRY**

replaces parts - Diamond Forestry 22-0041

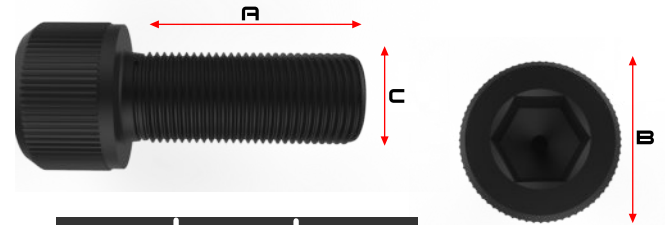
# TOOTH HOLDER

replaces part - Diamond Forestry 90-7035  
used with - Diamond Forestry 22-019 /  
Quadco Q10078T



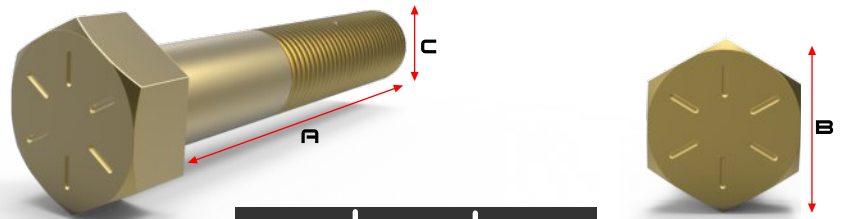
## XSC-DF164-H

STEEL TYPE	STEEL HARDNESS	BOLT REQUIRED	WEIGHT	A LENGTH	B WIDTH	C LENGTH	D LENGTH
42CrMo	HRC40-42	1/2-20x 3" SKT	2.20 lbs	3-1/2"	1-1/2"	1-5/8"	2"



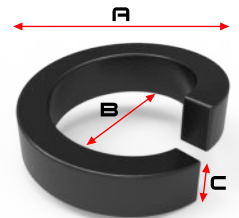
## SOCKET BOLTS

PART NUMBER	THREAD SIZE	MATERIAL TYPE	GRADE	HEAD TYPE	DRIVE SIZE	A LENGTH	B DIA	C DIA	FIT
1/2-20x3" SKT	1/2-20"	Black Oxide Alloy Steel	8	Socket	3/8"	3"	3/4"	1/2"	XFB-QU110, XFB-QU209, XFB-QU247



## HEX BOLTS

PART NUMBER	THREAD SIZE	MATERIAL TYPE	GRADE	HEAD TYPE	DRIVE SIZE	A LENGTH	B LENGTH	C DIA	FIT
1/2-20x2-1/4" HEX	1/2-20"	Black Oxide Alloy Steel	8	HEX	3/4"	2-1/4"	3/4"	1/2"	XFB-QU110, XFB-QU209, XFB-QU247, XFB-DF235
1/2-20x2-1/2" HEX	1/2-20"	Black Oxide Alloy Steel	8	HEX	3/4"	2-1/2"	3/4"	1/2"	XFB-QU110, XFB-QU209, XFB-QU247, XFB-DF235
1/2-20x3-1/2" HEX	1/2-20"	Black Oxide Alloy Steel	8	HEX	3/4"	3-1/2"	3/4"	1/2"	XFB-QU110, XFB-QU209, XFB-QU247, XFB-DF235



## SPLIT LOCK WASHER

PART NUMBER	MATERIAL TYPE	MATERIAL HARDNESS	SERRATED	A OD	B ID	C THICKNESS	FITS BOLTS
M12LW	Black Oxide Alloy Steel	C40	TOP & BOTTOM	5/8"	7/16"	3/16"	M12 & 1/2"

## IMPACT RACHET ADAPTER

PART NUMBER	MALE SOCKET SIZE	DRIVE SIZE	FITS BOLT SIZE
IMPACT-3/8	3/8"	1/2"	1/2-20" SKT

