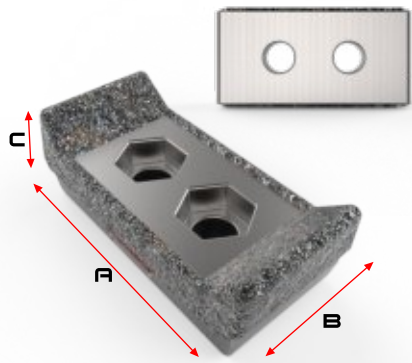


**PETERSON
MORBARK
PRECISION HUSKEY
VERMEER**

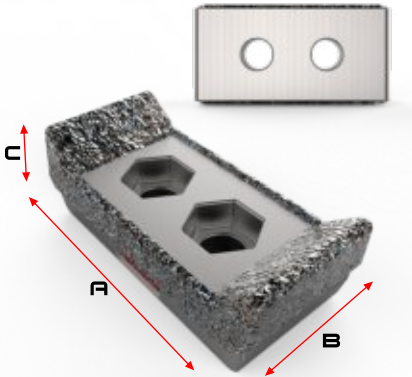


XWR-PE152

6-PASS CARBIDE OVERLAY | 2.8" WIDE X 5.1" LENGTH
| 2-BOLT X 1-11/16" ON CENTERS | 3/4" FASTENERS

CUTTER TYPE	STEEL TYPE	STEEL HARDNESS	BOLT HOLE TYPE	WEIGHT	A LENGTH	B WIDTH	C HEIGHT
Wood	42CrMo	HRC40-42	3/4" Hole 1-1/8" HEX HEAD	4.47 lbs	5.10"	2.80"	1.90"

**PETERSON
MORBARK**

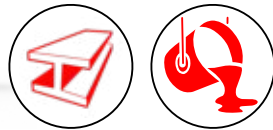
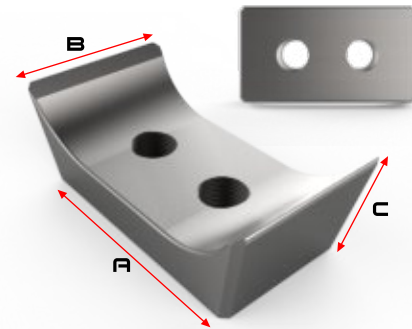


XWR-PE153

CARBIDE OVERLAY WITH SHARP EDGE | 3" WIDE X 6.3" LENGTH
| 2- BOLT X 2" ON CENTERS BOLT SPACING

CUTTER TYPE	STEEL TYPE	STEEL HARDNESS	BOLT HOLE TYPE	WEIGHT	A LENGTH	B WIDTH	C HEIGHT
Wood	42CrMo	HRC40-42	7/8" Hole 1-5/16" HEX HEAD	6.66 lbs	6.30"	3"	2.25"

**MORBARK
PRECISION HUSKEY
VERMEER**

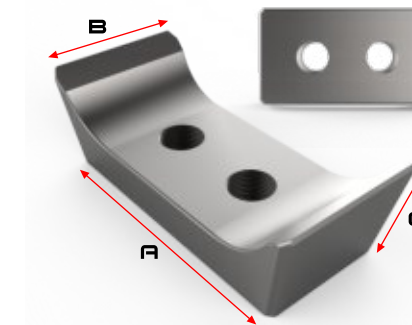


XWR-MO199

STEEL FORGED KNIFE EDGE BIT | 2.7" WIDE X 4.8" LENGTH
| 2-BOLT X 1-11/16" ON CENTER BOLT SPACING | 3/4" FASTENERS

CUTTER TYPE	STEEL TYPE	STEEL HARDNESS	BOLT HOLE TYPE	WEIGHT	A LENGTH	B WIDTH	C HEIGHT
Wood	42CrMo	HRC40-42	3/4"-16	3.00 lbs	4.25"	2.7"	1.75"

MORBARK



XWR-MO200

STEEL FORGED KNIFE EDGE BIT | 3" WIDE X 6.5" LENGTH
| 2- BOLT X 2" ON CENTERS BOLT SPACING

CUTTER TYPE	STEEL TYPE	STEEL HARDNESS	BOLT HOLE TYPE	WEIGHT	A LENGTH	B WIDTH	C HEIGHT
Wood	42CrMo	HRC40-42	7/8"-14	4.85 lbs	5.63"	3"	2"